

# CITRUS AIRE

---

@ELECTRONIC CITY

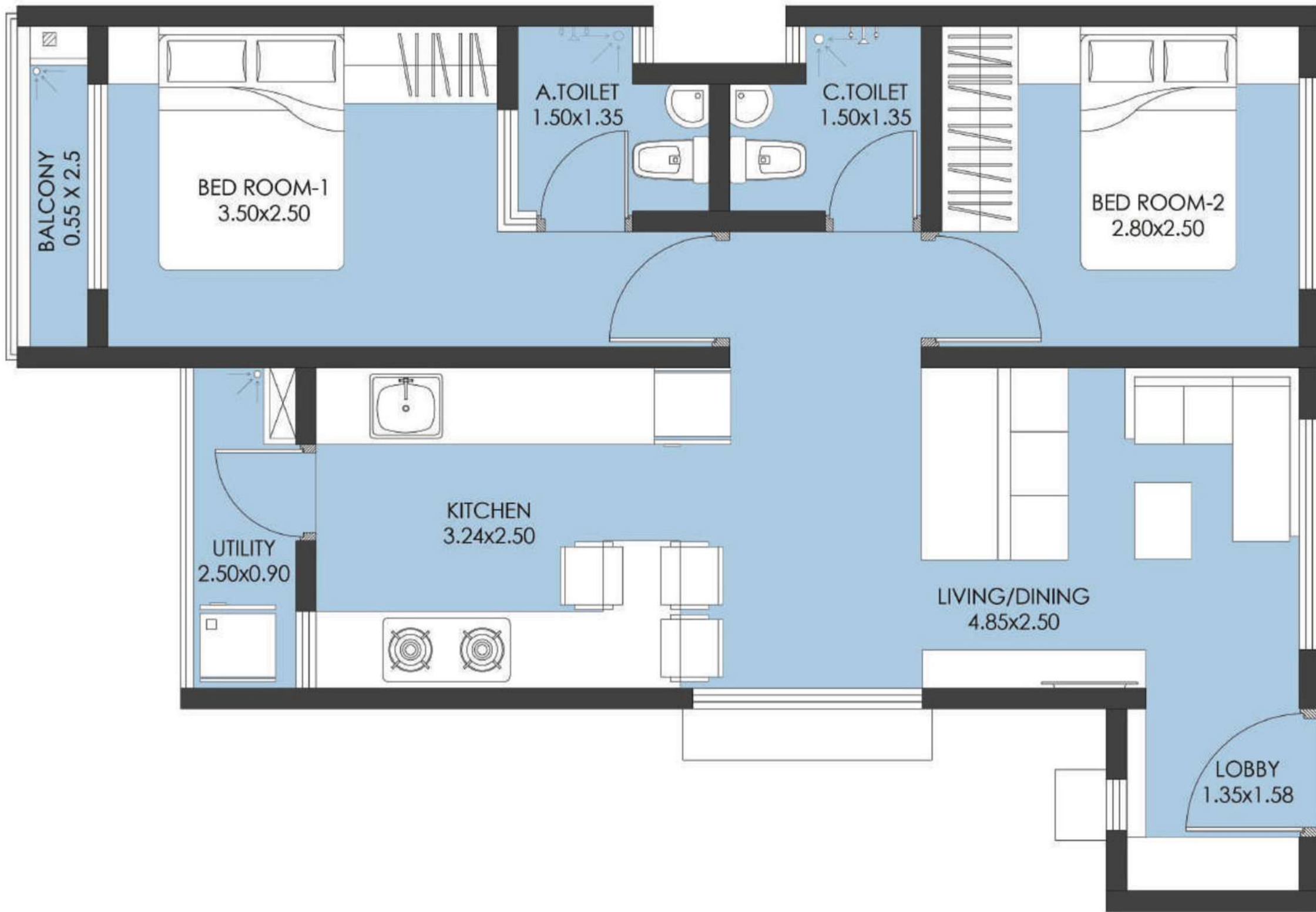
---







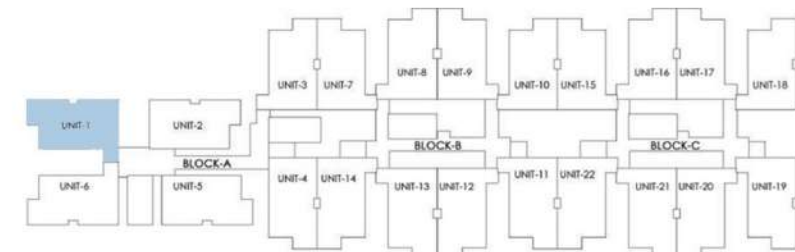




**SBUA**  
**733.14 SQ.FT**



**TYPICAL FLOOR KEY PLAN**





**CITRUS**  
A I R E



## **Specification:**

Exclusive design 198 no's of 2 Bedroom apartments in 3 wings

### **Structure**

- 1 Basement + Stilt + 9 storied precast structure

### **Car Parking**

- Covered car parks in basement and stilt
- Visitors car parks on ground level

### **Foyer / Living / Dining**

- Superior quality vitrified tiles flooring & skirting
- Plastic emulsion paint for walls & ceiling

### **Bedrooms**

- Plastic emulsion paint for walls and ceiling

### **Toilets**

- Superior quality antiskid ceramic tile flooring
- Superior quality ceramic glazed tiling dado up to door height
- False ceiling

### **Kitchen**

- Superior quality antiskid ceramic tile flooring
- Superior quality ceramic glazed tiling dado.
- Plastic emulsion paint for ceiling

### **Balcony / Utility**

- Superior quality antiskid ceramic tile flooring
- MS painted hand railings
- Plastic emulsion paint for ceiling
- All external walls are textured paint

### **Doors**

- Main Door – Engineered Wood/Timber frame with OST shutter
- Bedroom Doors - Timber / Engineered Wood Frame with masonite skin shutter
- Toilets corrugated UPVC door and master bedroom toilet – Frost glass sliding door

### **Windows / Sliding Doors**

- Superior quality aluminum glazed sliding doors & window panels

### **Staircase**

- Fire exit staircase
- MS Handrails
- Textured paint for walls
- Plastic emulsion paint for ceiling

### **Lifts**

- Lift of reputed make of 12 passenger 3 and 6 passenger 2 for 3 wings

### **Electrical Specification**

- Split AC provision in Master bedroom and in living area
- BESCOM power supply of 3KVA of Phase 1
- 1KVA standby power supply for apartments and 100% backup for common areas and for facilities.
- Television and Telephone points in living area and master Bedroom
- Intercom facility services
- Fire resistance electrical cables with modular switches, MCB provided in each apartment
- 24/7CC TV Camera surveillance for GF lift lobby

### **Plumbing & Sanitary**

- Sanitary fixtures of reputed make in both the toilets
- Chrome plated fittings of reputed make in both the toilets

### **Common Facilities**

- Well-Equipped Clubhouse
- Swimming pool
- Children's play area
- Outdoor Sports Arena
- Amphitheater
- Jogging Track

### **Landscape**

- Designer Landscape

# CITRUS A I R E

@ ELECTRONIC CITY



+91 8088007733

RERA Acknowledgement No:  
PR/KN/180314/002785

Find us on      
 home@citrusventures.in

